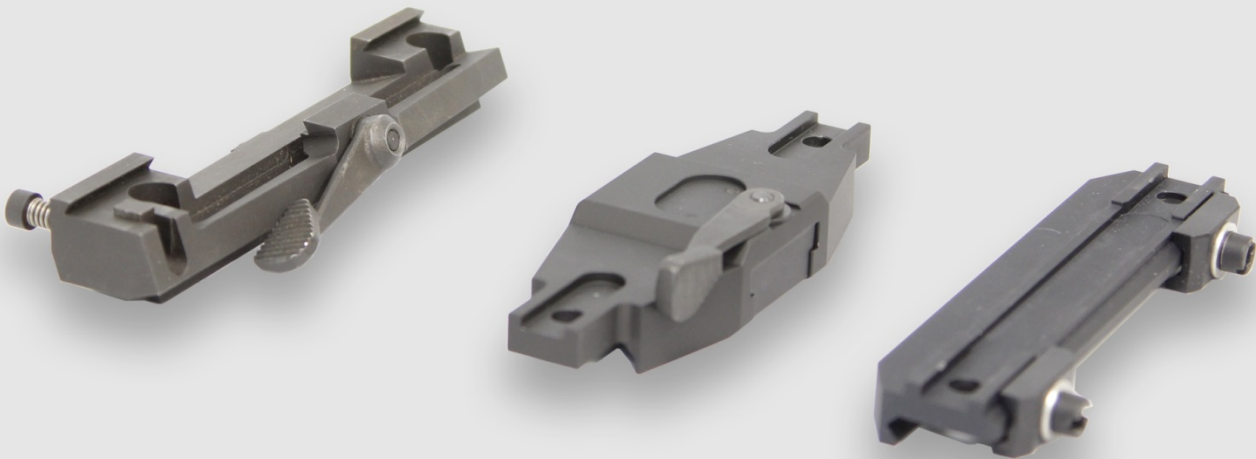


Elite Riflescope Mounts



Range of effective interfaces for weapons and sighting systems

- Designed for all rail types
- Quick connect or fixed adjustable mounts
- Operationally proven for all weapons in service

The Scrome interfaces for the LTE Marksman Scope are designed to meet all size and adaptability requirements. This equipment is field-tested in military operations fields and validated as mounts requiring no modification of the weapons used.

These mounts are of two types:

- "Screw-on" mounts attached to the weapon for a permanent installation of the scope.
- "Quick" mounts that can be mounted very simply and effectively through a button and locked by lever.
- All types of fixtures can be equipped with additional accessories to suit the ergonomics of the scope (spacers or wedges or usage extension).

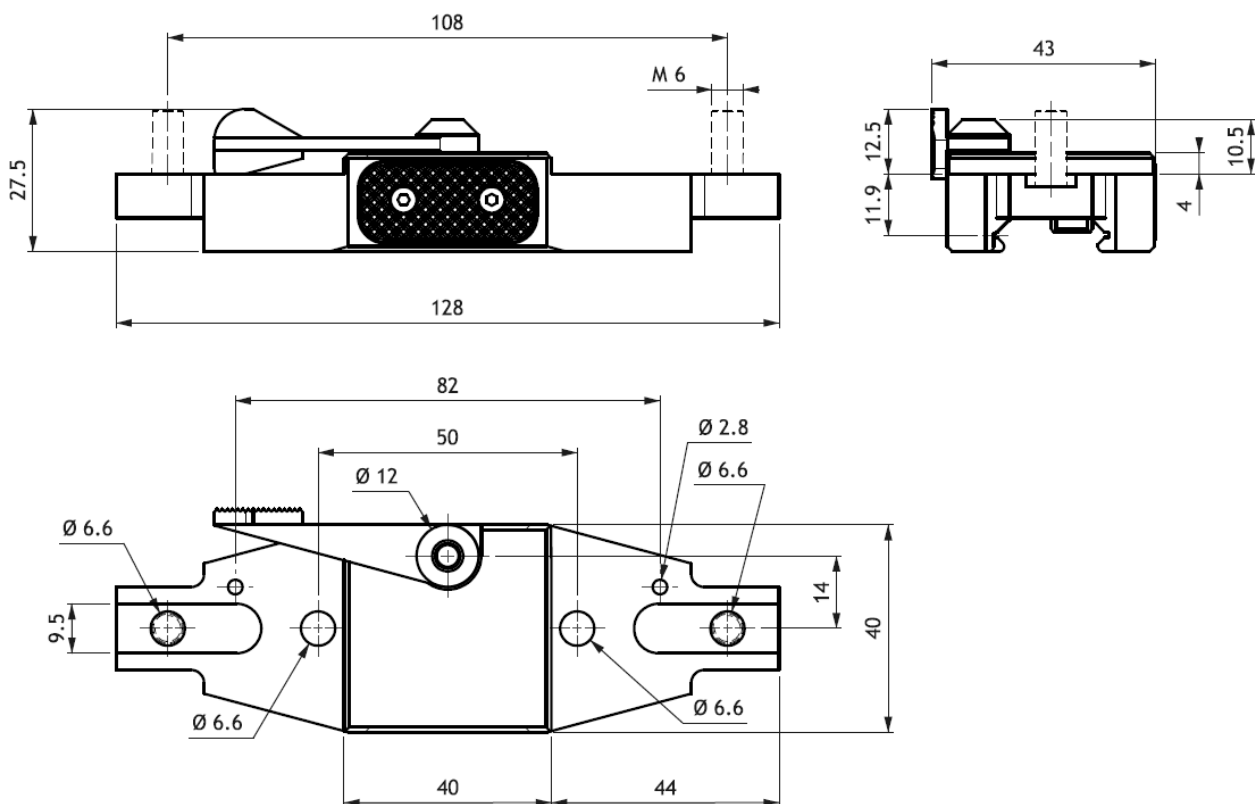
These interfaces exist for mounting on Weaver or Picatinny rails.

A Adapters

A.1 Universal Adapter

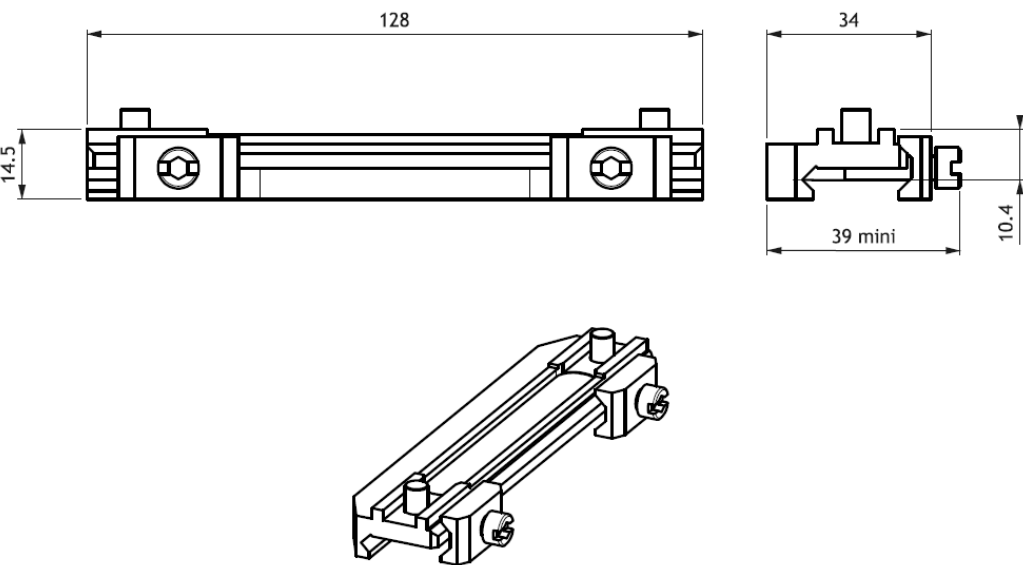
This adapter has been designed to fit on a Picatinny rail. This is a "quick" release interface. This adapter accepts all adaptations described below.

A.2 Fixed Adapter:



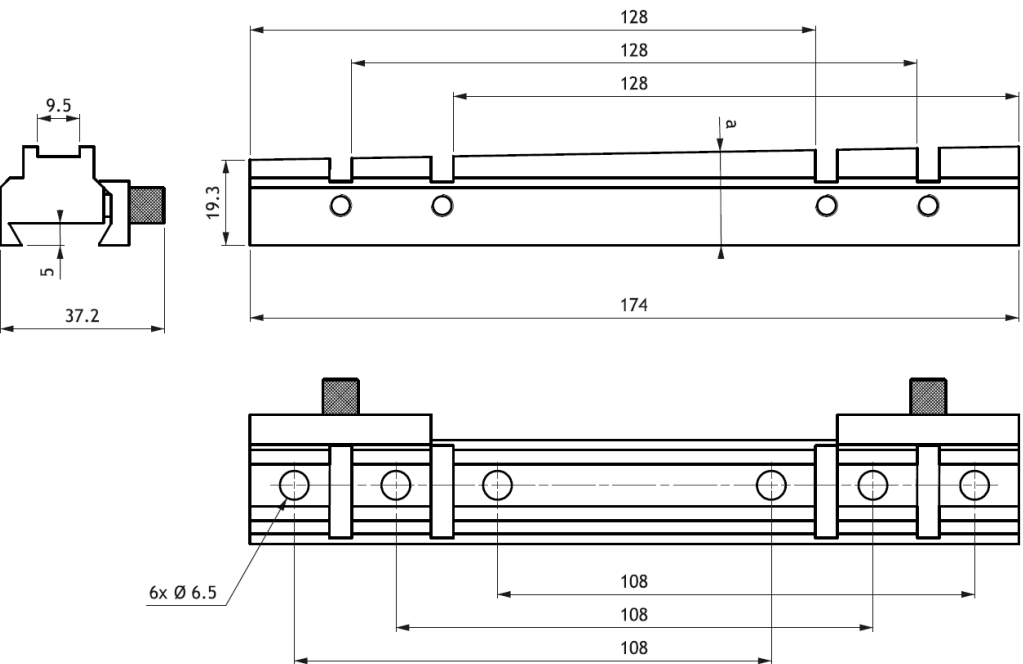
This adapter, with its simple design, is an excellent, non-intrusive Scope-Rifle interface. Its compact design makes it one of the lowest and lightest on the market. It recovers the optical axis as close to the barrel of the weapon as possible, for even more efficient sighting. The fixed adapter is mounted directly on the Picatinny rail, attached using two M5 screws.

The fixed adapter is available in an angled version (dimensions available on request) and accepts many adaptations.



A.3 Multi-Position Adapter:

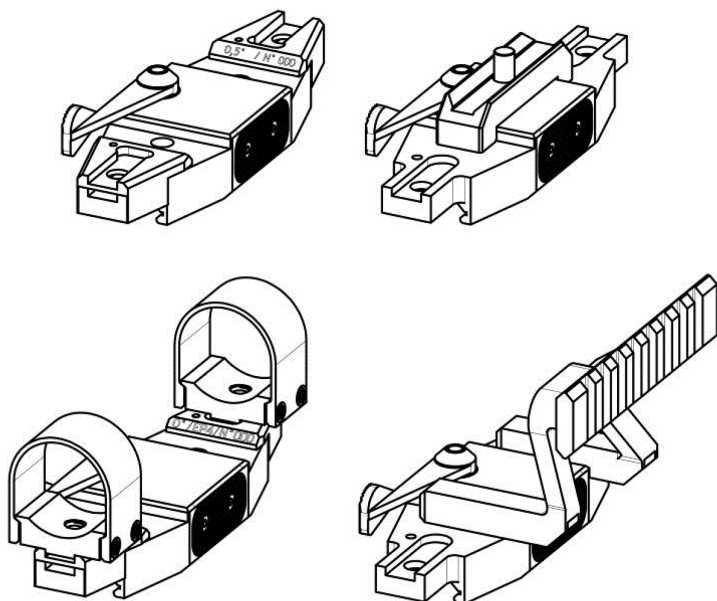
This scope adapter was designed to address issues related to rails not suited to the ergonomics of the scope. It enables the equipment to be repositioned in three positions. This interface is mounted on a Weaver rail.



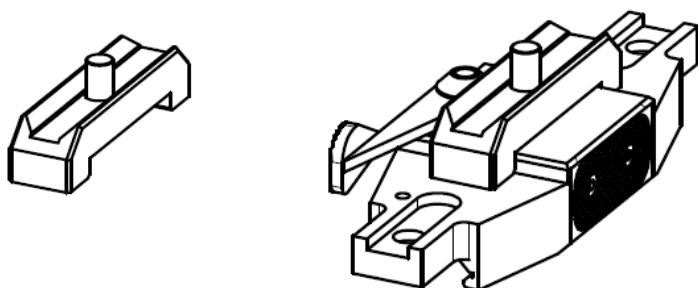
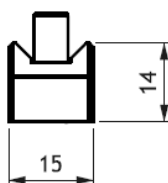
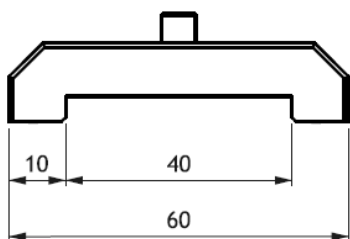
B - Extensions, examples of possible combinations (General):

All mounting interfaces can be added on the same adapter (*except offset rail for Aimpoint). This interface can be achieved with a sloped support face. Standard dimensions are presented in the table below, other sizes are available on request.

Model	I	II	III
a (degrees)	0	0.5	1

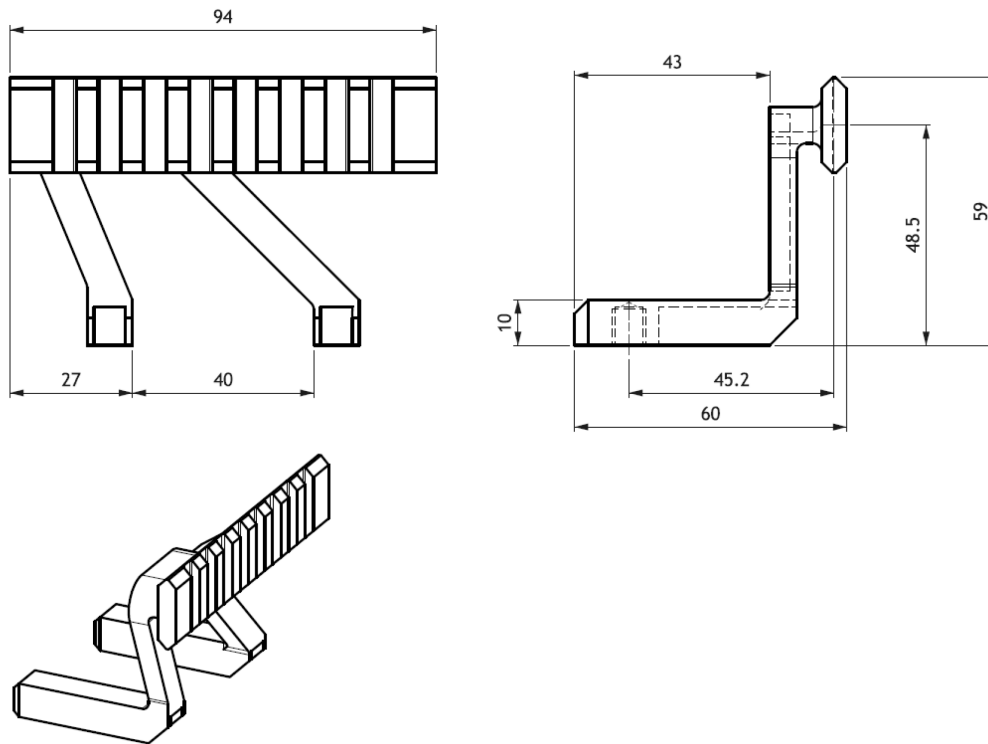


B.1 - Interface for PIRAT, AIMPOINT, and other sights



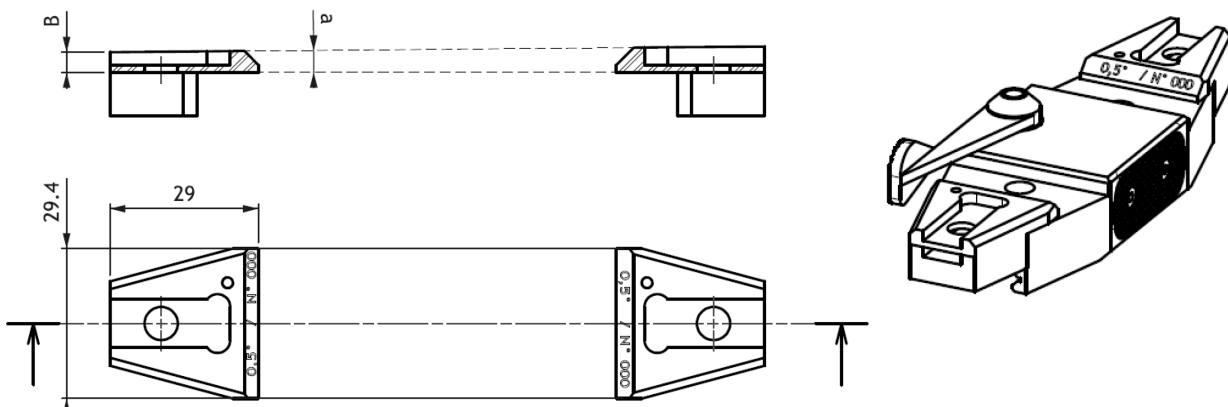
B.2 Offset Rail:

The offset rail will let you enhance your sighting system by adding equipment in parallel.



B.3 Interface shims:

Interface shims were designed with the aim of making the Quick Adapters adaptable to your scope regardless of the model.

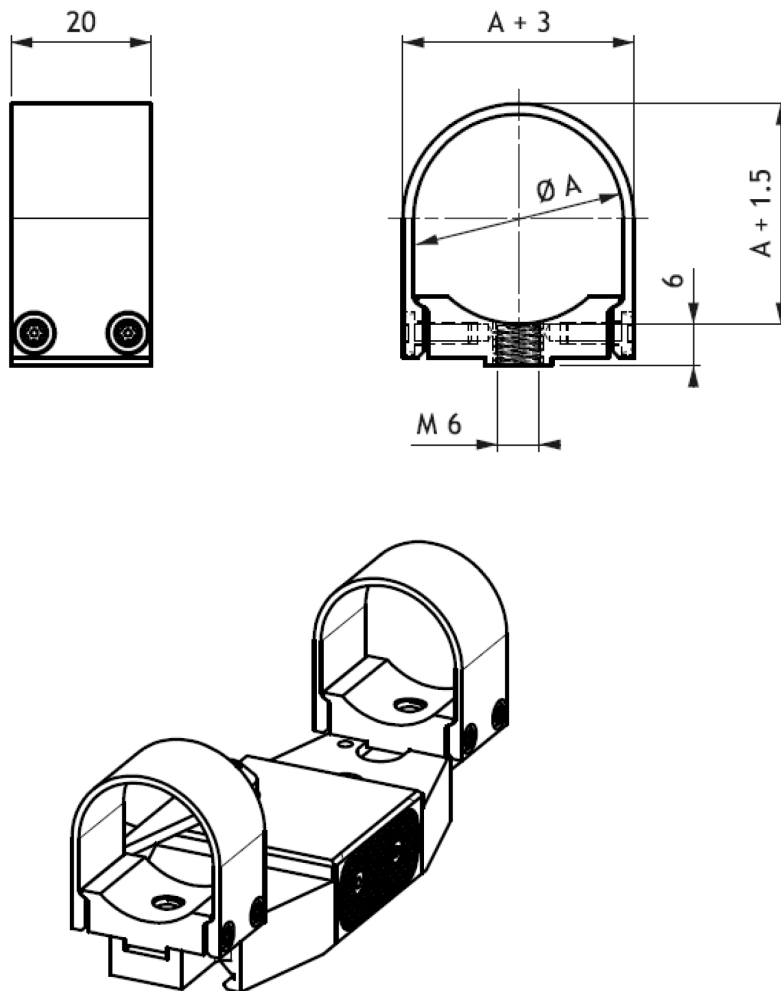


Standard dimensions are presented in this table, other sizes are available on request.

Model	I	II	III	IV	V
a (degrees)	0.5	1	0	0	0
B (mm)	4	4	4	10	15

B.4 Mounting Ring:

We design mounting rings for your round bodied scopes. These rings allow simple and efficient mounting using a single clamp method.



Standard dimensions are presented in this table, other sizes are available on request.

Model	I	II
A (mm)	30	34



HIGH PERFORMANCE OPTO-MECHANICS AND MILITARY OPTRONICS

